

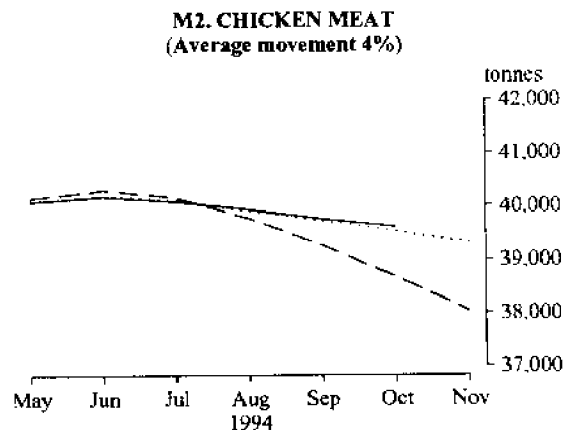
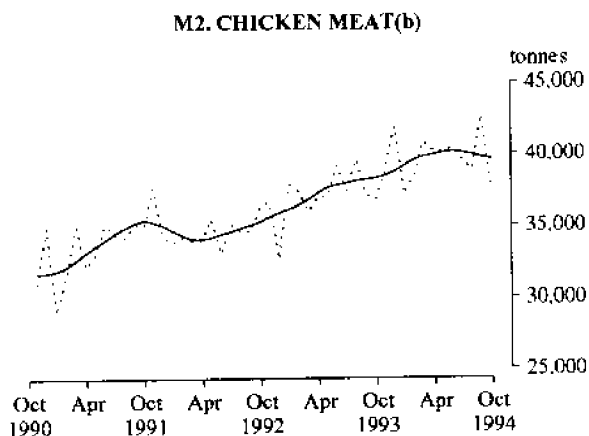
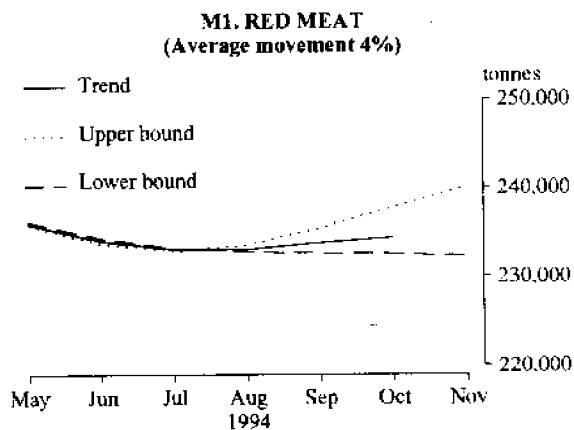
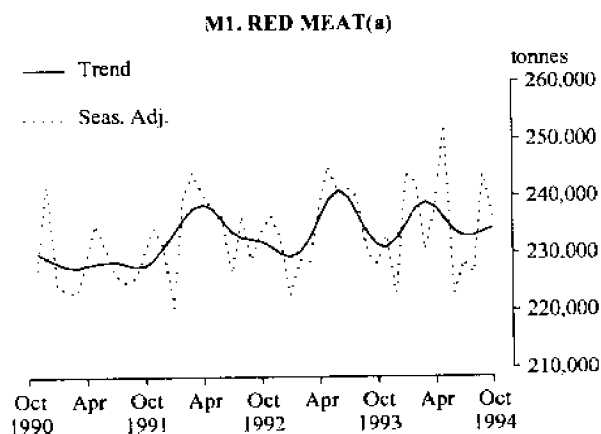
**MANUFACTURING PRODUCTION, AUSTRALIA
NOVEMBER 1994, PRELIMINARY**

NOTES

This publication presents preliminary monthly estimates for selected major indicators of manufacturing production for Australia. The statistics are collected from all the relevant manufacturing establishments other than single establishment manufacturing enterprises with fewer than four persons employed. The next issue will be released on the 31st of January 1995.

RICHARD MADDEN
Acting Australian Statistician

PRODUCTION STATISTICS, AUSTRALIA : LONGER TERM TRENDS AND SHORT TERM SENSITIVITY ANALYSIS

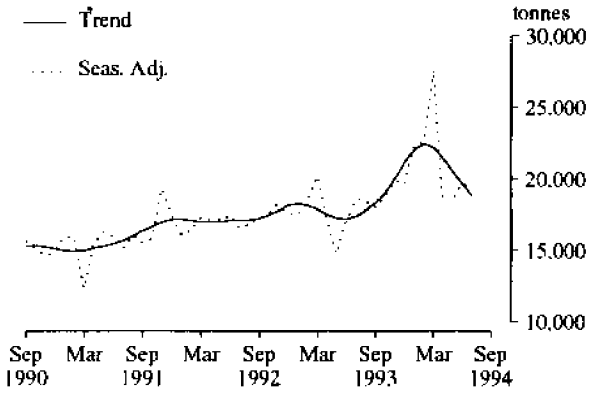


For footnotes see end of tables.

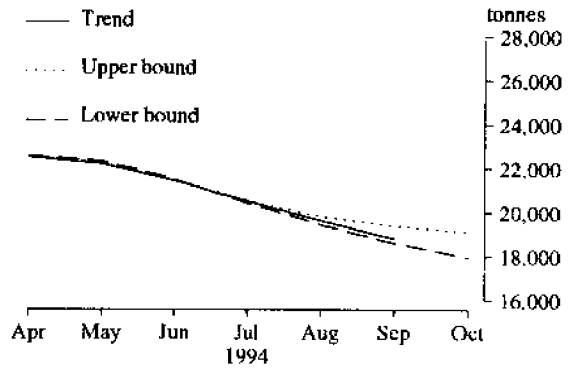
INQUIRIES

. for further information about statistics in this publication and the availability of related unpublished statistics, contact Rod Smith on Melbourne (03) 615 7635 or any ABS office.
. for information about other ABS statistics and services please refer to the back page of this publication.

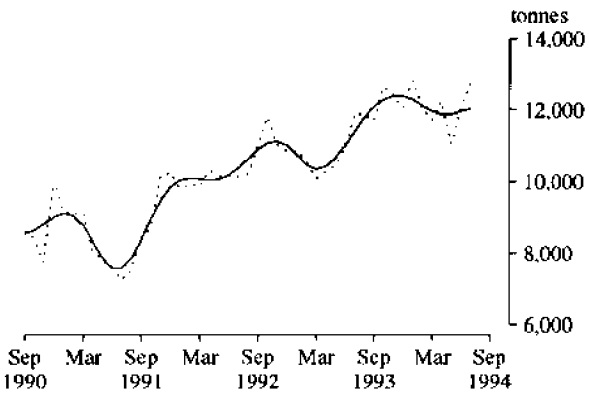
M3. CHEESE



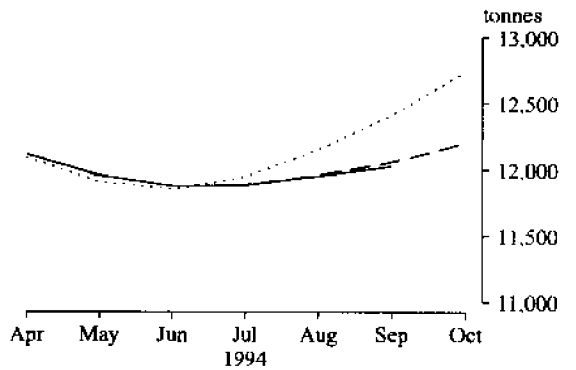
M3. CHEESE
 (Average movement 7%)



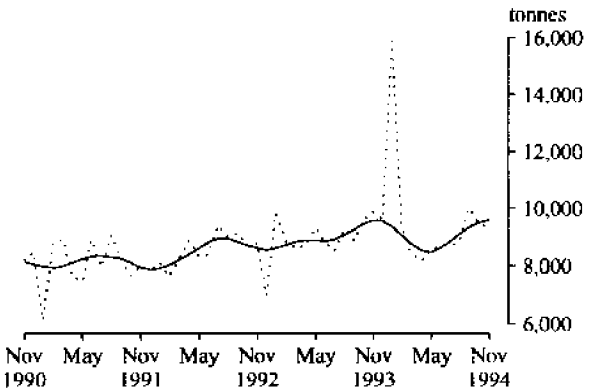
M4. BUTTER



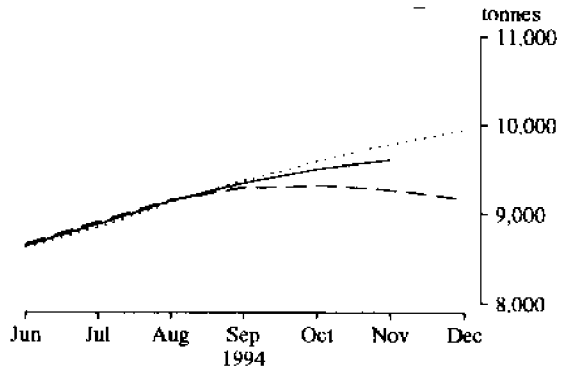
M4. BUTTER
 (Average movement 5%)



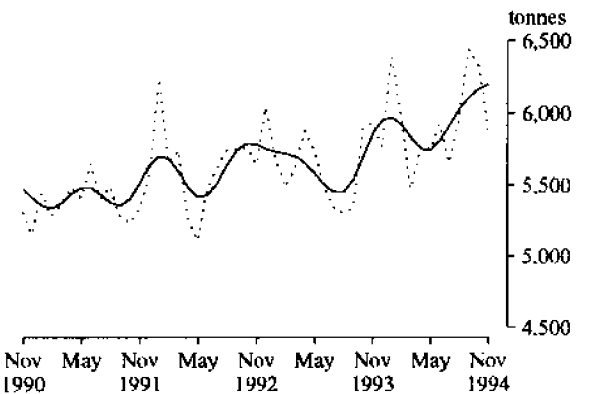
M5. CHOCOLATE BASE CONFECTIONERY



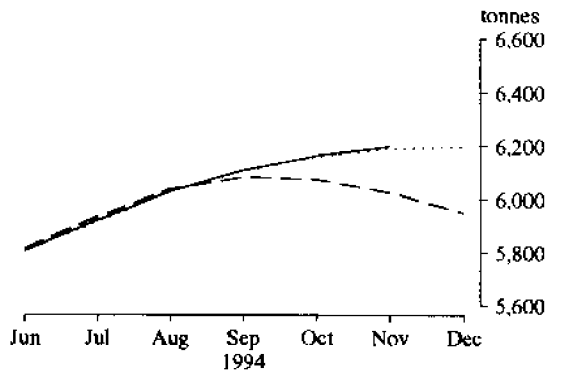
M5. CHOCOLATE BASE CONFECTIONERY
 (Average movement 7%)



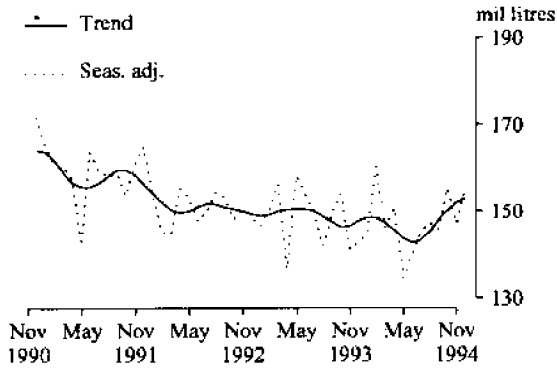
M6. OTHER CONFECTIONERY



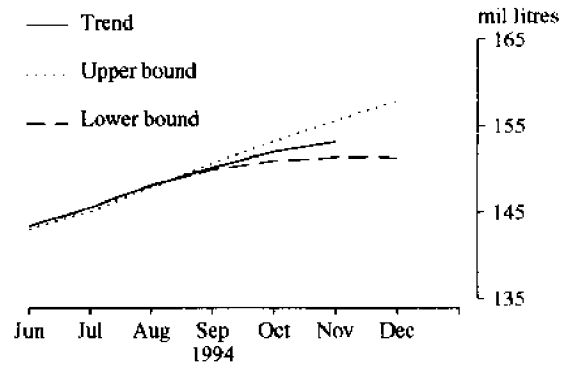
M6. OTHER CONFECTIONERY
 (Average movement 5%)



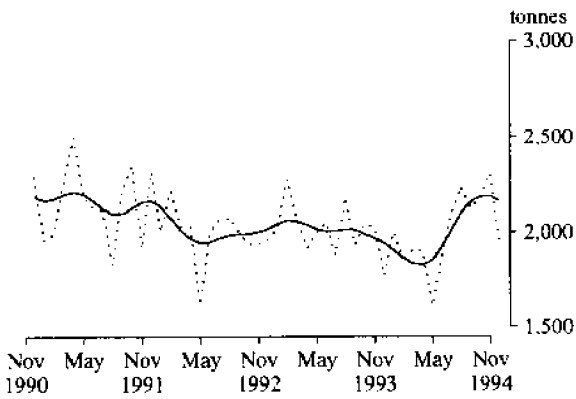
M7. BEER(d)



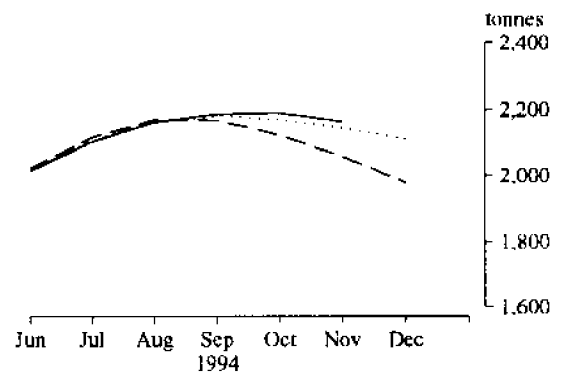
**M7. BEER
(Average movement 5%)**



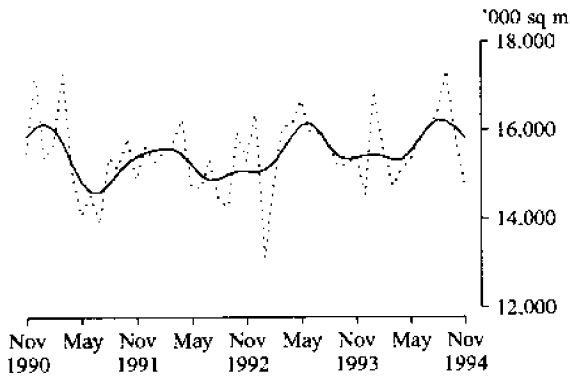
M8. TOBACCO AND CIGARETTES(e)



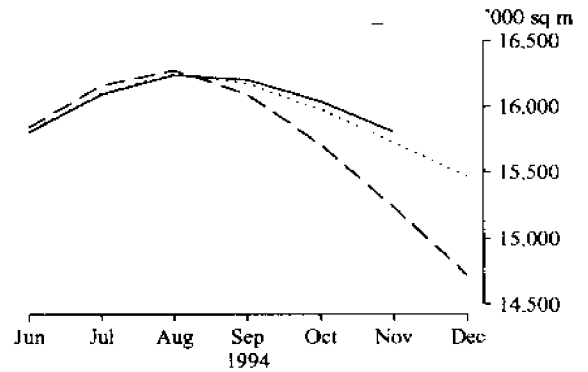
**M8. TOBACCO AND CIGARETTES
(Average movement 8%)**



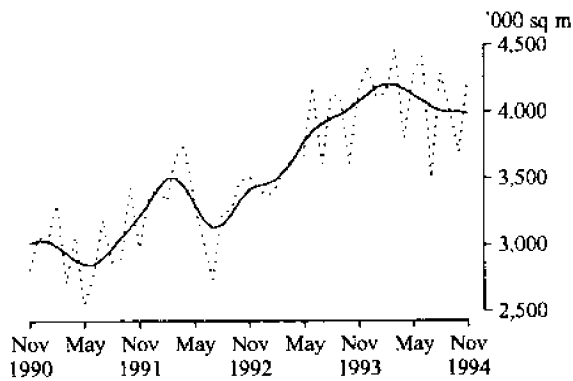
M9. MAN-MADE FIBRE WOVEN FABRIC



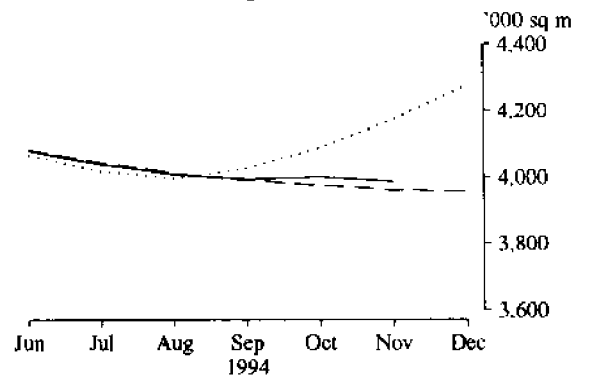
**M9. MAN-MADE FIBRE WOVEN FABRIC
(Average movement 6%)**

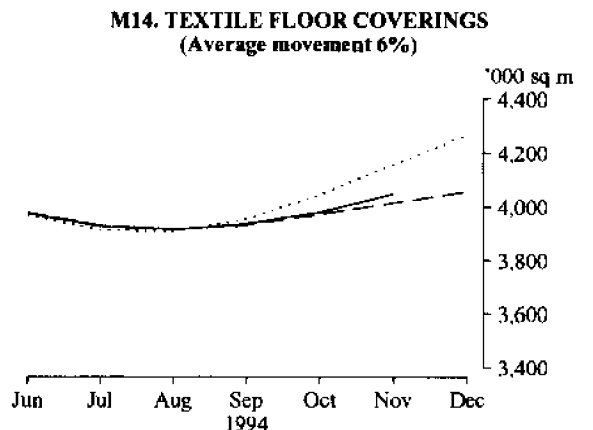
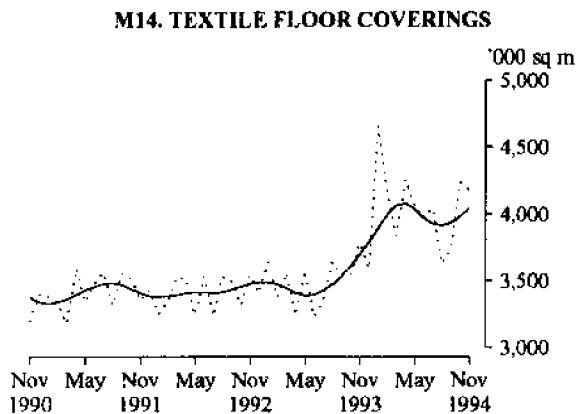
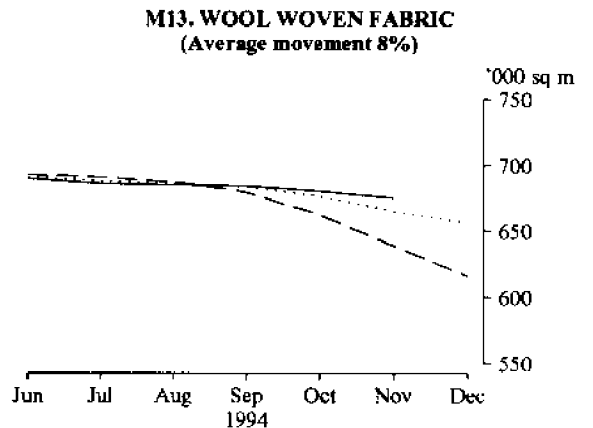
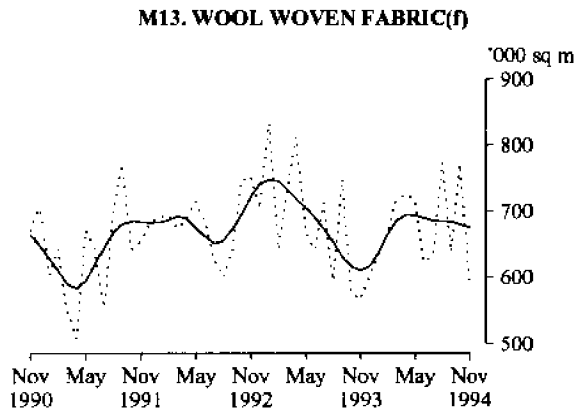
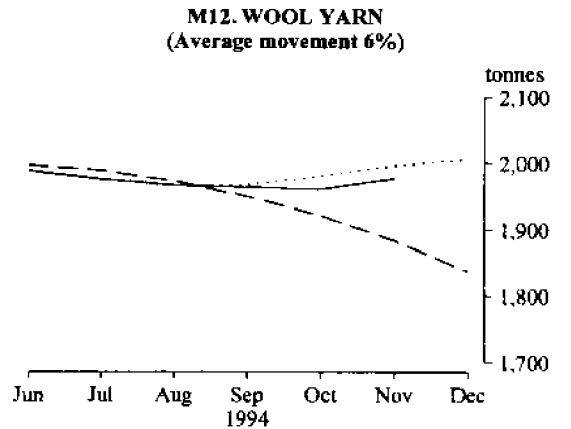
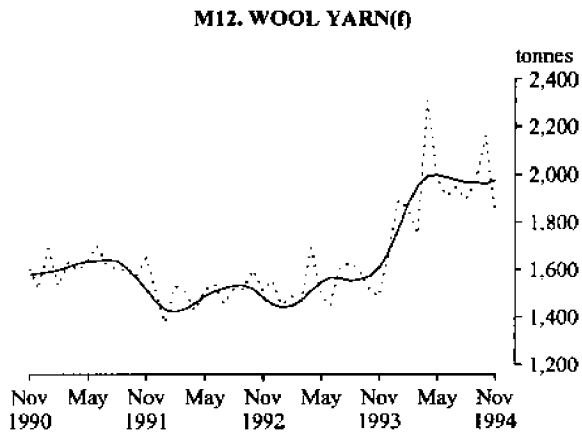
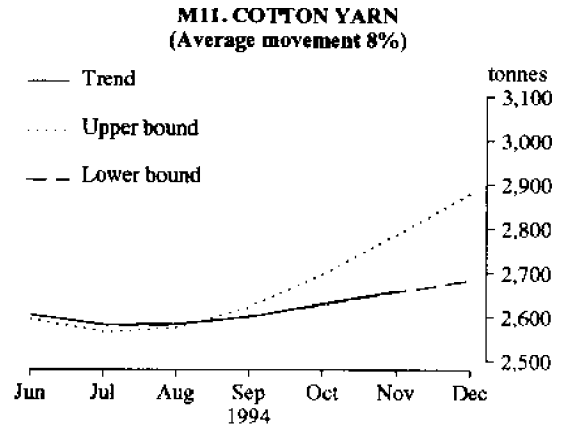
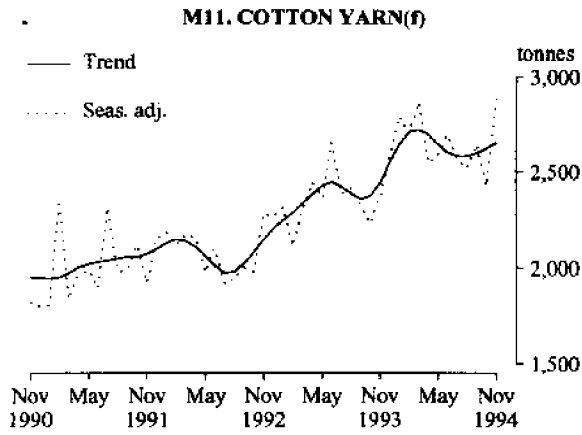


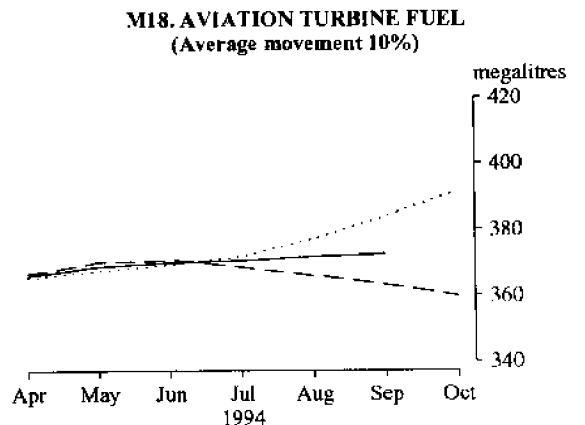
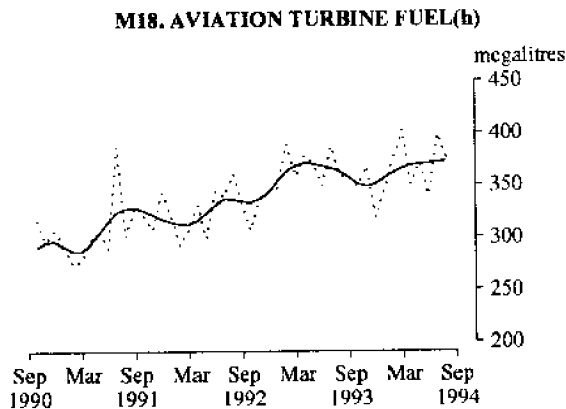
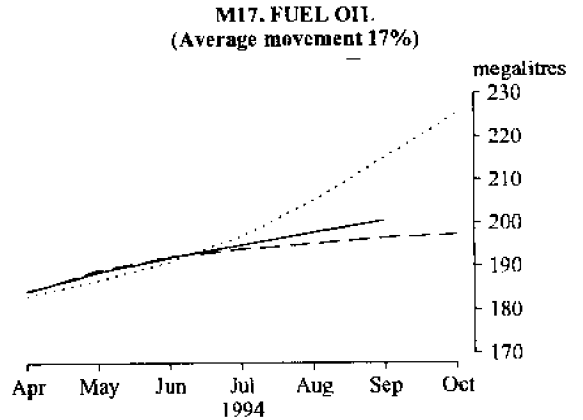
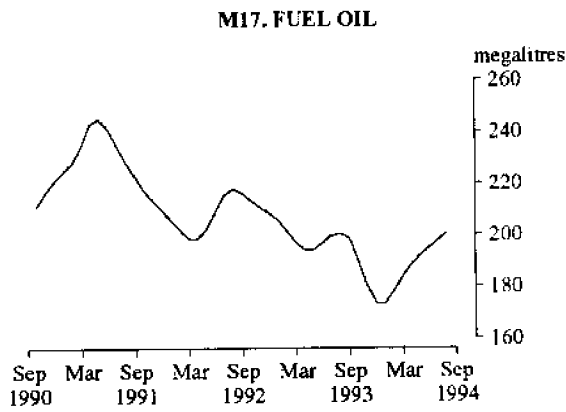
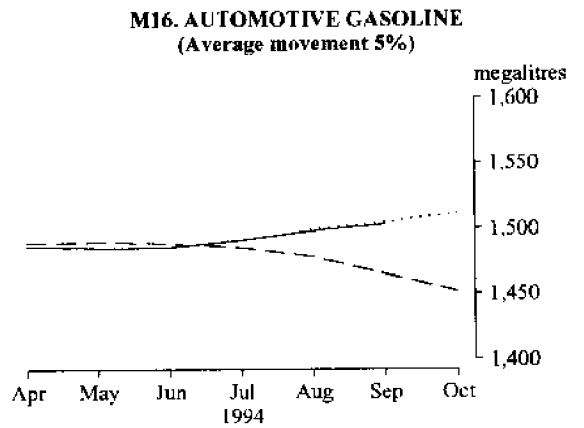
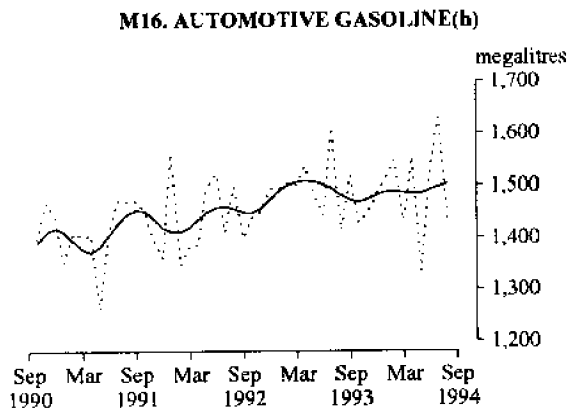
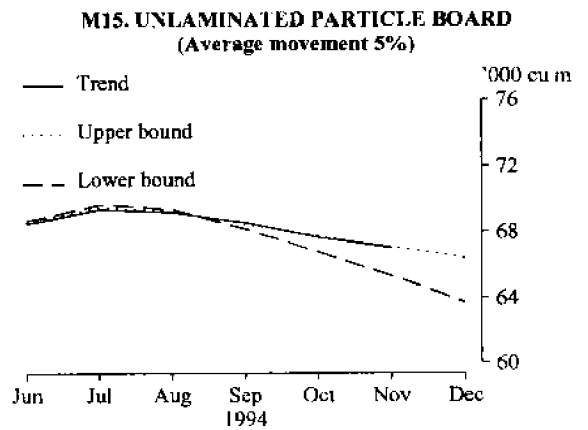
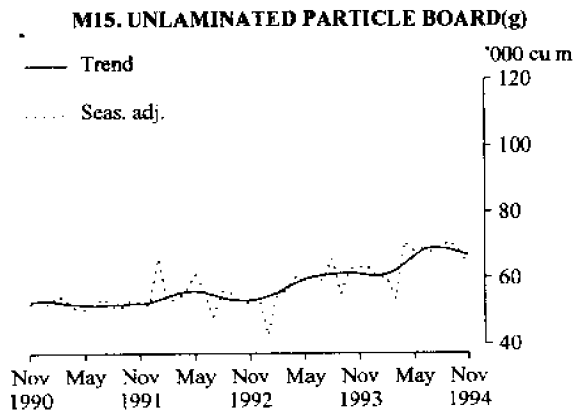
M10. COTTON WOVEN FABRIC(f)



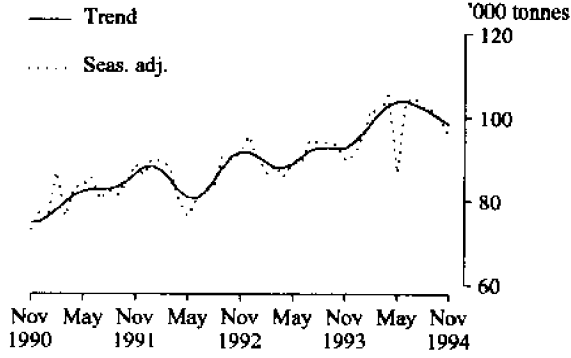
**M10. COTTON WOVEN FABRIC
(Average movement 9%)**



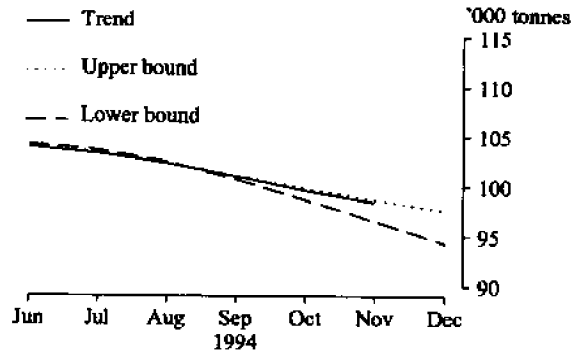




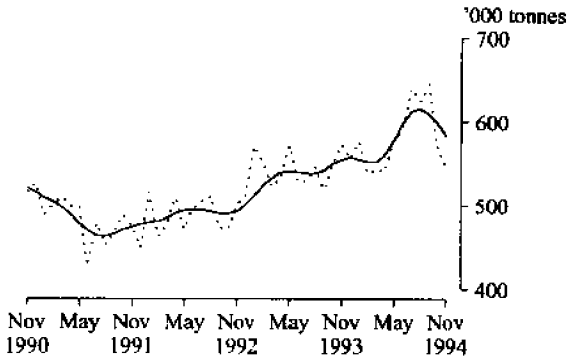
M19. PLASTICS IN PRIMARY FORMS(i)



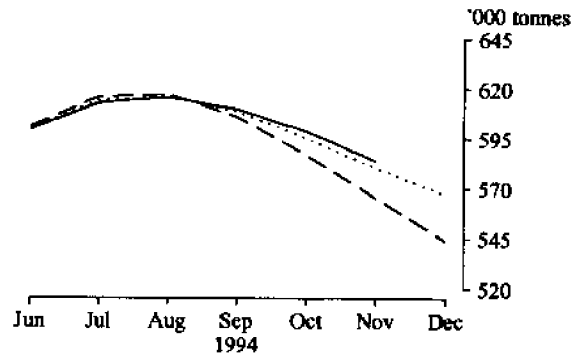
**M19. PLASTICS IN PRIMARY FORMS
(Average movement 4%)**



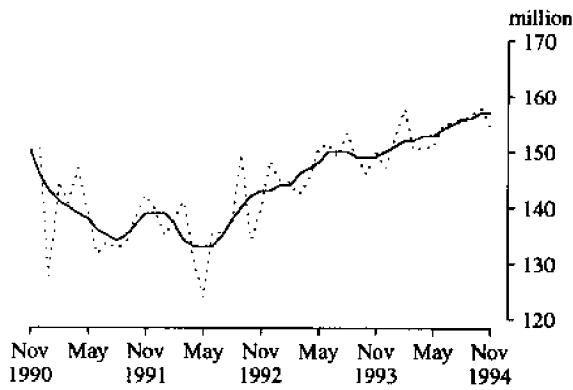
M20. PORTLAND CEMENT



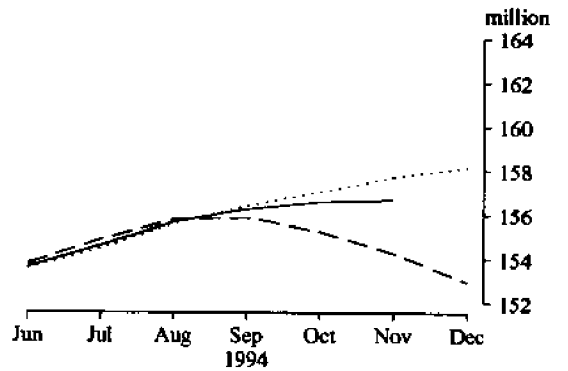
**M20. PORTLAND CEMENT
(Average movement 5%)**



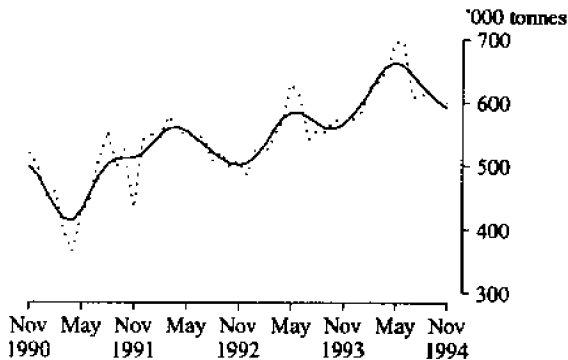
M21. CLAY BRICKS



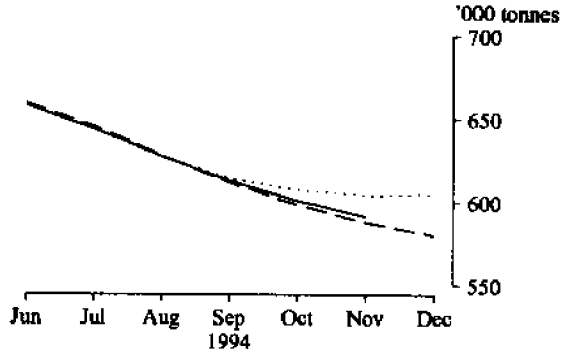
**M21. CLAY BRICKS
(Average movement 4%)**



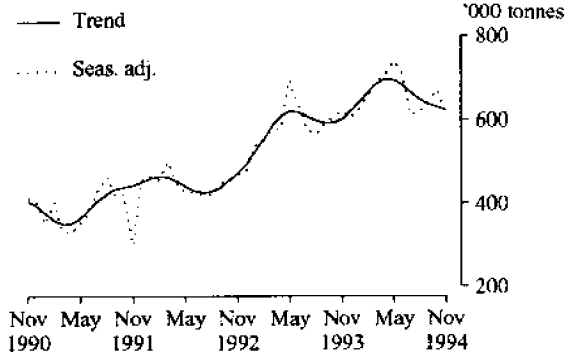
**M22. BASIC IRON, SPIEGELEISEN
AND SPONGE IRON**



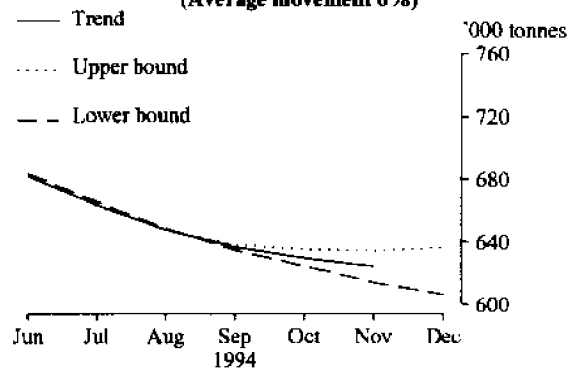
**M22. BASIC IRON, SPIEGELEISEN
AND SPONGE IRON
(Average movement 5%)**



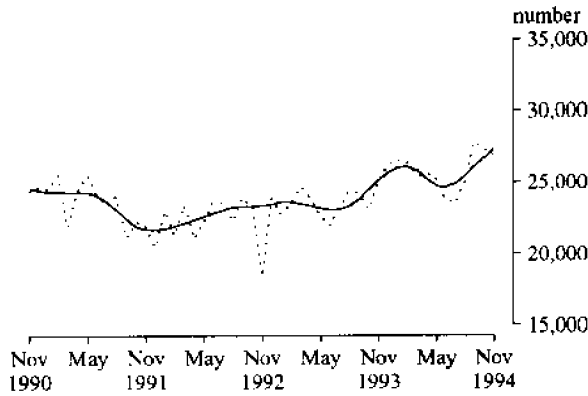
M23. BLOOMS AND SLABS



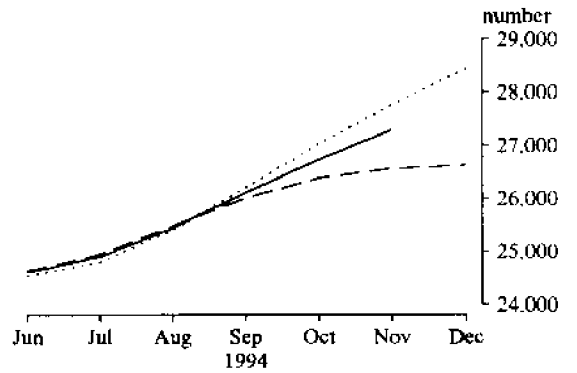
M23. BLOOMS AND SLABS
(Average movement 6%)



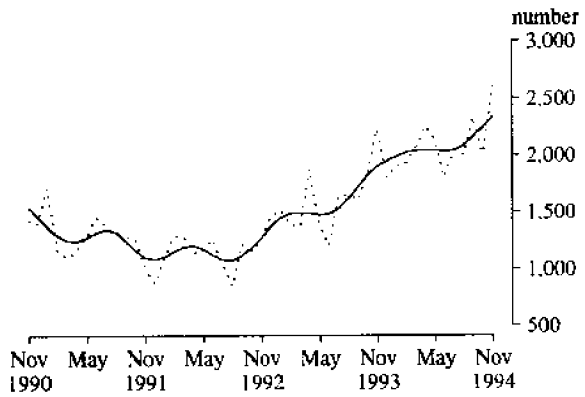
M24. CARS AND STATION WAGONS



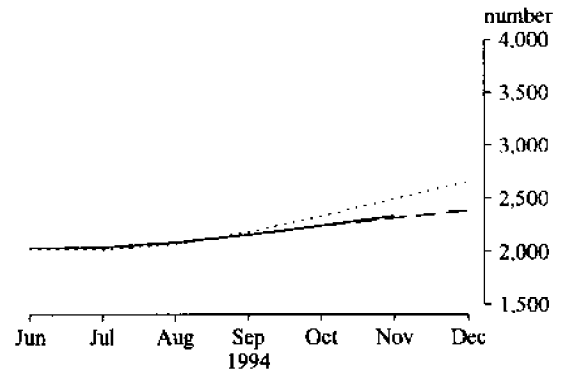
M24. CARS AND STATION WAGONS
(Average movement 8%)



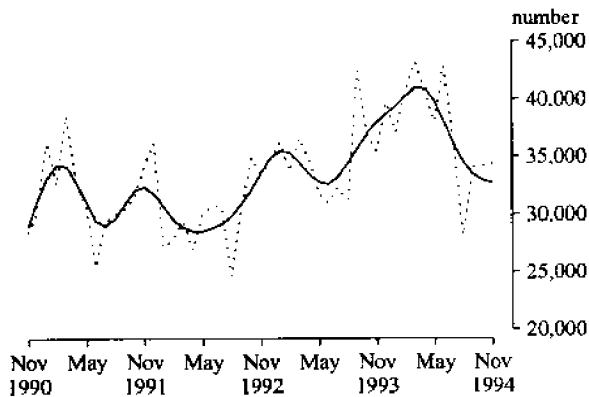
M25. VEHICLES FOR GOODS AND MATERIALS(k)



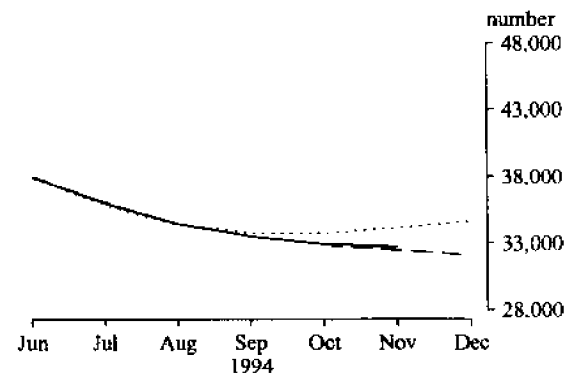
M25. VEHICLES FOR GOODS AND MATERIALS
(Average movement 12%)



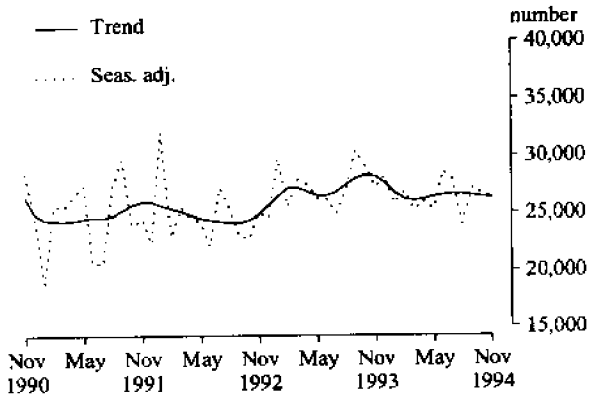
M26. REFRIGERATORS, DOMESTIC



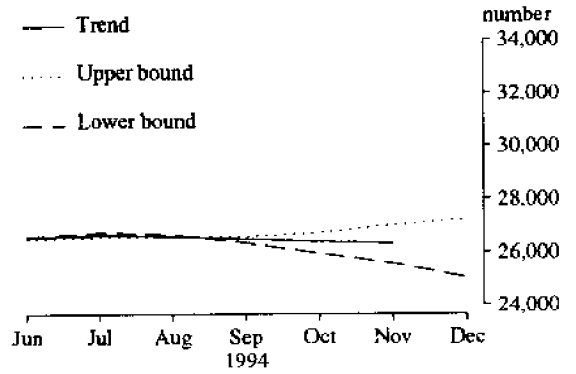
M26. REFRIGERATORS, DOMESTIC
(Average movement 9%)



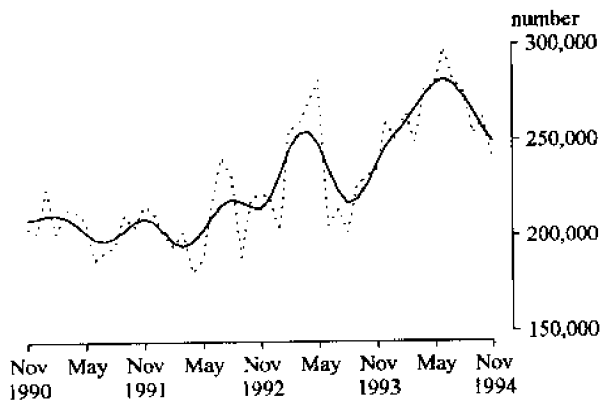
M27. CLOTHES WASHING MACHINES, DOMESTIC



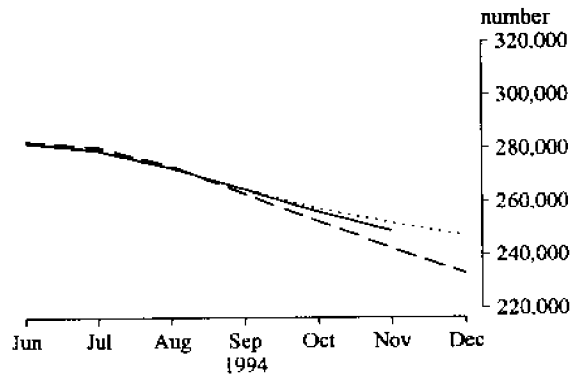
M27. CLOTHES WASHING MACHINES, DOMESTIC
(Average movement 10%)



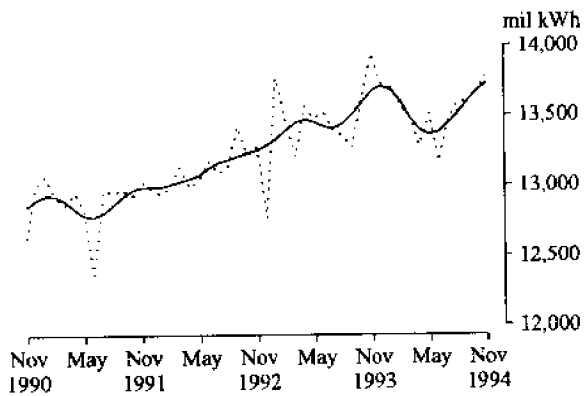
M28. ELECTRIC MOTORS



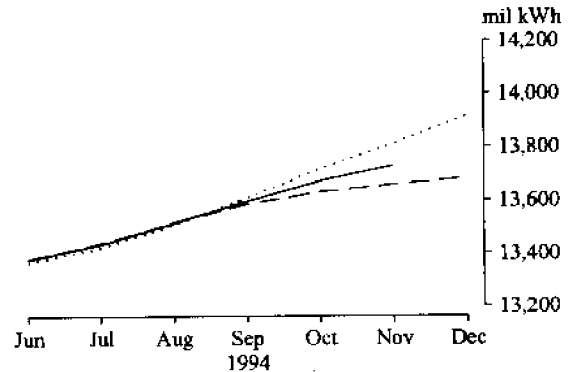
M28. ELECTRIC MOTORS
(Average movement 7%)



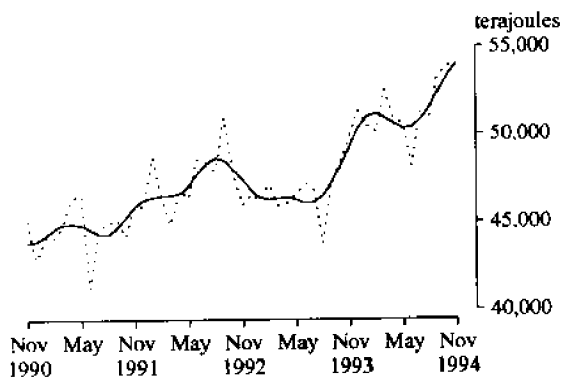
M29. ELECTRICITY



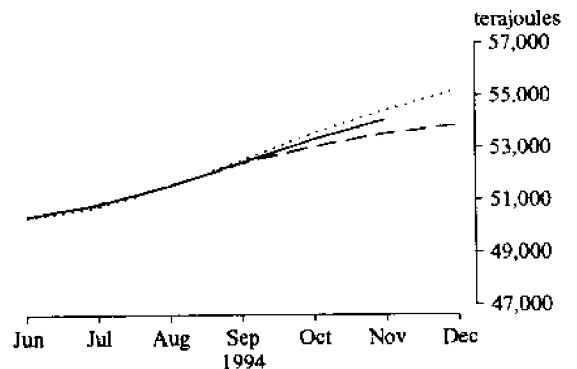
M29. ELECTRICITY
(Average movement 1%)



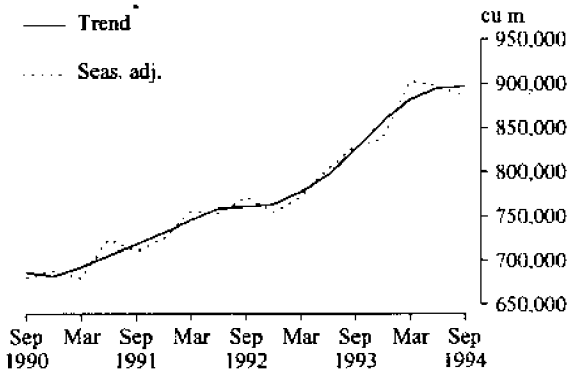
M30. GAS(l)



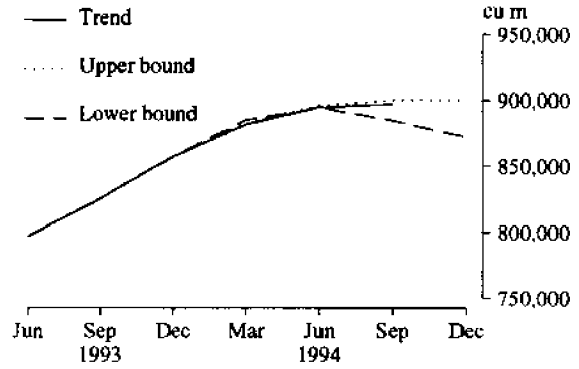
M30. GAS
(Average movement 3%)



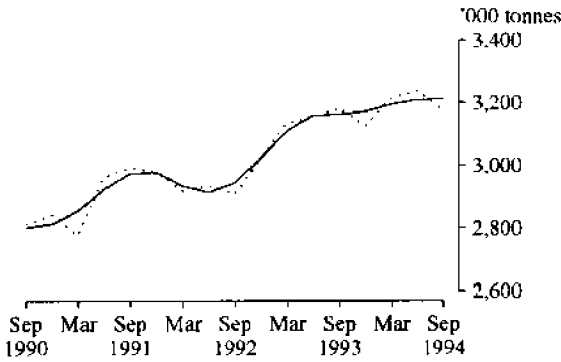
Q1. UNDRESSED SAWN TIMBER(m)(n)



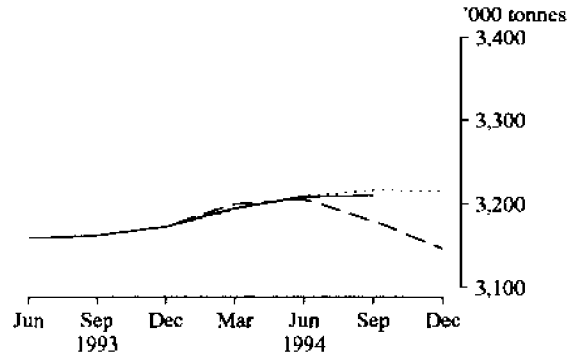
**Q1. UNDRESSED SAWN TIMBER
(Average movement 3%)**



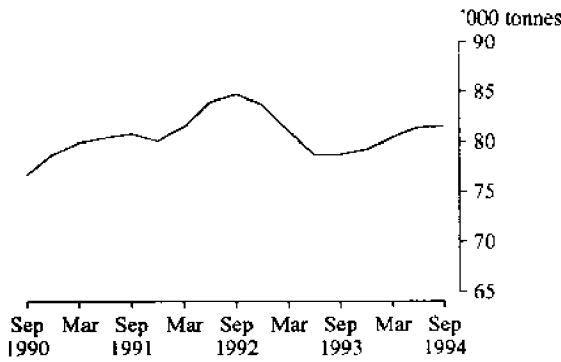
Q2. ALUMINA(n)



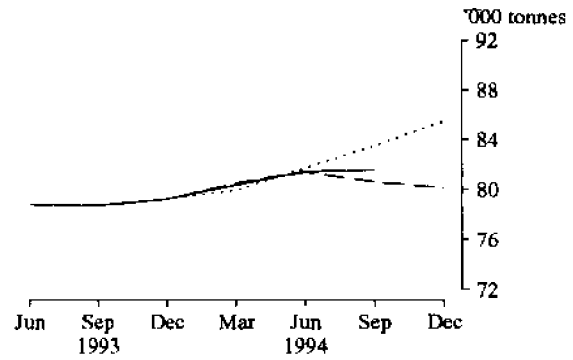
**Q2. ALUMINA
(Average movement 2%)**



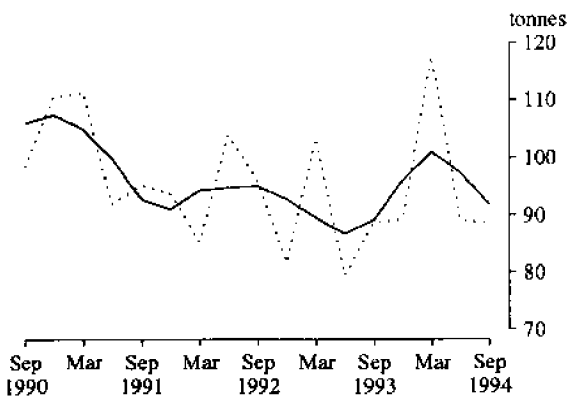
Q3. ZINC(m)(o)



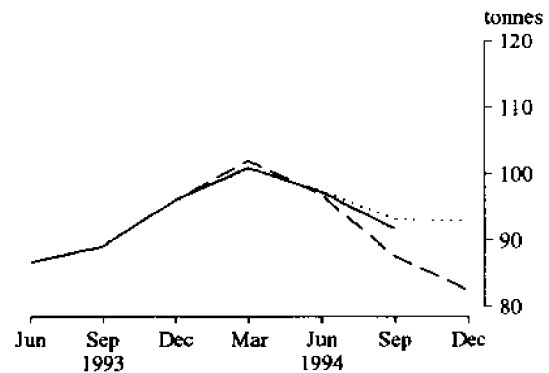
**Q3. ZINC
(Average movement 6%)**

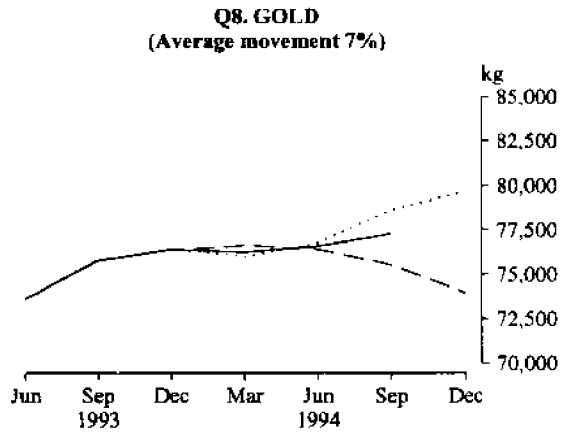
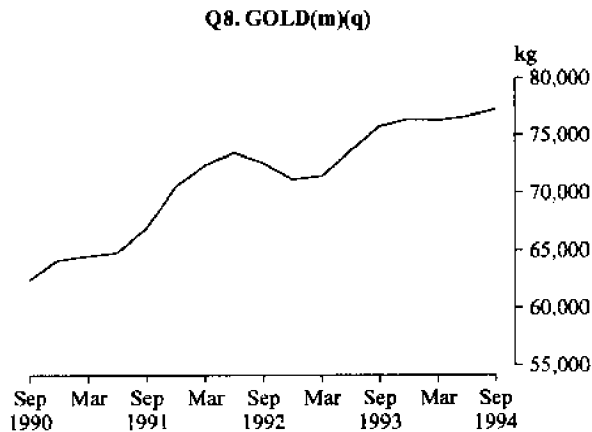
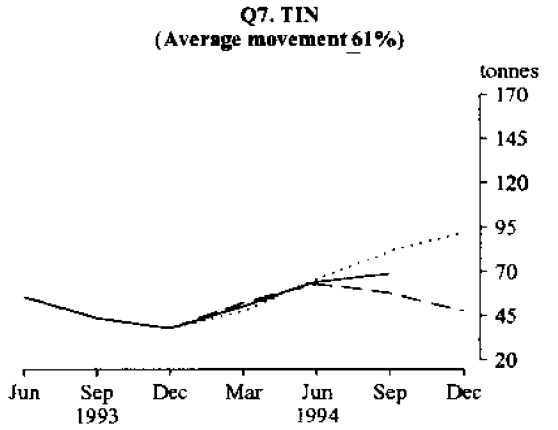
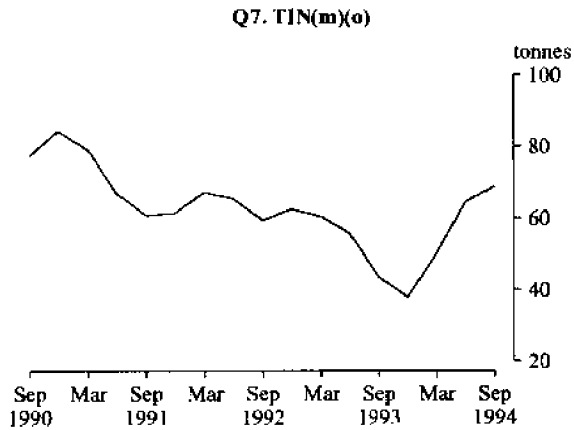
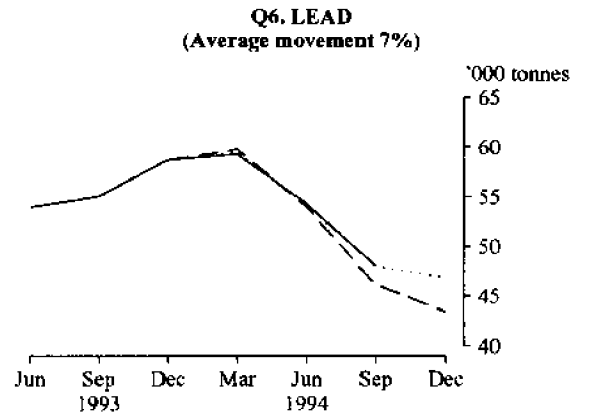
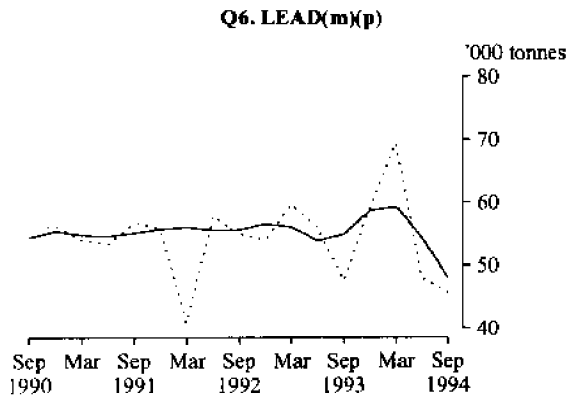
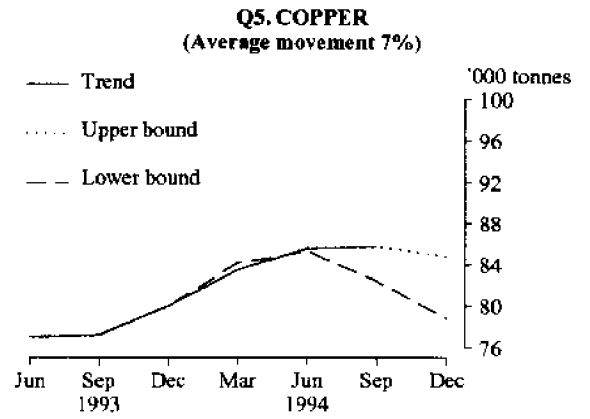
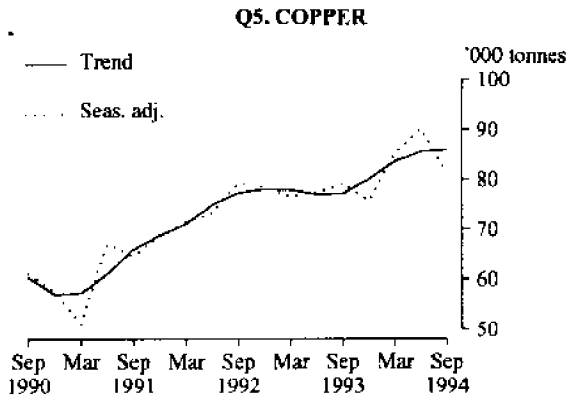


Q4. SILVER(m)



**Q4. SILVER
(Average movement 10%)**





PRODUCTION STATISTICS, AUSTRALIA, NOVEMBER 1994, PRELIMINARY

No. Item	Series	Unit	1994									Percentage changes between latest month shown and-	
			Mar.	Apr.	May	June	July	Aug.	Sept.	Oct.	Nov.	prev. month	same month prev. year
M1. Red meat(a)	Orig.	tonnes	252,414	226,398	254,836	223,595	218,342	235,220	255,116	238,882	n.y.a.	-6.4	1.1
	S. adj.	"	230,464	238,612	252,291	222,876	228,632	226,414	243,862	236,319	n.y.a.	-3.1	3.6
	Trend r	"	238,890	237,978	235,968	233,956	233,001	233,020	233,784	234,346	n.y.a.	0.2	1.3
M2. Chicken meat(b)	Orig.	"	41,323	41,301	39,063	42,313	41,225	36,353	40,682	38,811	n.y.a.	-4.6	1.6
	S. adj.	"	40,846	40,134	40,186	40,445	39,473	38,888	42,660	37,666	n.y.a.	-11.7	2.4
	Trend r	"	39,800	39,950	40,084	40,172	40,082	39,927	39,746	39,604	n.y.a.	0.4	3.4
M3. Cheese(c)	Orig. r	"	20,679	18,857	16,808	9,215	11,009	16,386	24,954	n.y.a.	n.y.a.	52.3	6.7
	S. adj. r	"	22,385	22,666	27,611	18,537	18,528	19,719	19,323	n.y.a.	n.y.a.	-2.0	4.4
	Trend r	"	22,089	22,493	22,205	21,436	20,503	19,637	18,799	n.y.a.	n.y.a.	-4.3	8.0
M4. Butter(c)	Orig.	"	12,158	9,103	6,917	7,200	5,420	8,343	14,719	n.y.a.	n.y.a.	76.4	5.8
	S. adj.	"	12,820	12,010	11,714	12,242	11,051	12,008	12,731	n.y.a.	n.y.a.	6.0	7.0
	Trend r	"	12,278	12,114	11,957	11,882	11,886	11,952	12,029	n.y.a.	n.y.a.	0.6	5.5
M5. Chocolate base confectionery	Orig.	"	9,561	r 7,417	r 8,621	r 9,145	8,840	10,725	10,527	r 9,790	10,384	6.1	-1.1
	S. adj.	"	8,409	r 8,201	r 8,550	r 8,730	8,712	8,900	10,020	r 9,453	9,362	-1.0	5.3
	Trend r	"	8,752	8,535	8,497	8,635	8,878	9,134	9,343	9,503	9,603	1.0	0.1
M6. Other confectionery	Orig.	"	5,825	r 4,707	r 5,722	r 6,292	6,014	7,296	r 7,284	r 6,595	7,056	7.0	0.9
	S. adj.	"	5,477	r 5,773	r 5,748	r 5,923	5,657	5,975	r 6,442	r 6,327	5,890	-6.9	-0.7
	Trend r	"	5,829	5,753	5,745	5,807	5,920	6,031	6,112	6,165	6,198	0.5	5.9
M7. Beer(d)	Orig.	mil litres	164	126	131	125	127	143	143	r 160	190	18.9	7.3
	S. adj.	"	151	134	140	145	147	146	155	r 147	155	5.6	8.8
	Trend r	"	146	144	143	143	145	148	150	152	153	0.7	3.6
M8. Tobacco and cigarettes(e)	Orig.	tonnes	2,240	1,382	2,164	2,171	2,419	2,395	2,186	2,049	2,200	7.4	10.7
	S. adj.	"	1,898	1,615	1,861	2,094	2,238	2,124	2,188	2,309	1,957	-15.3	10.3
	Trend r	"	1,830	1,857	1,923	2,012	2,100	2,160	2,185	2,189	2,162	-1.2	11.3
M9. Man-made fibre woven fabric	Orig.	'000 sq m	16,070	14,435	15,945	17,325	16,825	17,362	18,601	r 16,164	15,431	-4.5	-4.9
	S. adj.	"	14,740	15,127	15,340	15,798	16,035	16,437	17,350	r 15,745	14,674	-6.8	-4.9
	Trend r	"	15,340	15,343	15,516	15,800	16,089	16,239	16,201	16,040	15,806	1.5	2.8
M10. Cotton Woven fabric(f)	Orig.	"	4,797	r 3,977	4,414	4,874	4,157	4,534	4,600	r 4,014	4,142	3.2	3.0
	S. adj.	"	4,465	r 3,798	4,265	4,413	3,497	4,293	4,045	r 3,693	4,246	15.0	2.2
	Trend r	"	4,201	4,171	4,123	4,079	4,038	4,009	3,996	4,001	3,987	-0.3	-2.2
M11. Cotton yarn(f)	Orig.	tonnes	3,081	2,422	2,612	3,201	2,736	2,818	3,000	2,571	2,971	15.6	26.0
	S. adj.	"	2,869	2,547	2,594	2,699	2,568	2,520	2,648	2,426	2,891	19.2	21.0
	Trend r	"	2,724	2,698	2,648	2,603	2,582	2,583	2,599	2,629	2,658	1.1	8.3
M12. Wool yarn(f)	Orig.	"	1,894	1,954	2,141	2,040	2,011	2,197	2,162	r 2,264	2,206	-2.6	30.2
	S. adj.	"	1,750	2,309	1,984	1,908	1,948	1,893	1,975	r 2,164	1,838	-15.1	24.0
	Trend r	"	1,954	1,993	1,999	1,988	1,976	1,967	1,965	1,961	1,977	0.8	22.8
M13. Wool woven fabric(f)	Orig.	'000 sq m	832	636	735	629	636	885	665	r 768	732	-4.6	12.3
	S. adj.	"	719	725	716	623	634	774	639	r 771	589	23.5	4.1
	Trend r	"	686	695	694	690	686	685	684	680	675	0.8	10.6
M14. Textile floor coverings	Orig.	"	4,064	3,822	4,366	4,046	4,001	4,137	4,215	r 4,506	4,836	7.3	10.9
	S. adj.	"	3,836	4,255	4,075	3,963	4,048	3,626	3,738	r 4,240	4,180	-1.4	10.5
	Trend r	"	4,066	4,080	4,040	3,975	3,925	3,913	3,935	3,979	4,048	1.7	9.5
M15. Unlaminated particle board(g)	Orig.	'000 cu m	67	64	70	73	66	78	79	r 73	77	6.3	12.0
	S. adj.	"	53	71	68	69	68	69	71	r 68	64	-5.4	1.0
	Trend r	"	62	64	67	69	69	69	69	68	67	-0.9	9.4

For footnotes see end of tables

PRODUCTION STATISTICS, AUSTRALIA, NOVEMBER 1994, PRELIMINARY

No. Item	Series	Unit	1994										Percentage changes between latest month shown and-	
			Mar.	Apr.	May	June	July	Aug.	Sept.	Oct.	Nov.	prev. month	same month prev. year	
M16. Automotive gasoline(h)	Orig. r	megalitres	1,572	1,358	1,591	1,338	1,589	1,620	1,434	n.y.a.	n.y.a.	-11.5	1.3	
	S. adj. r	"	1,548	1,432	1,553	1,334	1,526	1,630	1,430	n.y.a.	n.y.a.	-12.3	1.2	
	Trend r	"	1,490	1,487	1,485	1,486	1,492	1,498	1,503	n.y.a.	n.y.a.	0.3	1.4	
M17. Fuel oil(h)	Orig.	"	175	192	175	198	196	187	216	n.y.a.	n.y.a.	15.5	13.6	
	S. adj.	"	n.a.	n.a.	n.a.	n.a.	n.a.	n.a.	n.a.	n.a.	n.a.	n.a.	n.a.	
	Trend r	"	178	184	189	192	195	198	201	n.y.a.	n.y.a.	1.5	0.0	
M18. Aviation turbine fuel(h)	Orig.	"	362	348	353	342	334	378	373	n.y.a.	n.y.a.	-1.3	3.9	
	S. adj.	"	374	403	350	372	339	399	375	n.y.a.	n.y.a.	-6.0	4.7	
	Trend r	"	362	366	369	370	371	372	373	n.y.a.	n.y.a.	0.3	3.0	
M19. Plastics in primary forms(i)	Orig.	'000 tonnes	106.0	100.9	86.9	r 101.0	105.4	113.7	103.6	r 109.4	102.0	6.8	6.8	
	S. adj.	"	100.9	105.5	86.7	r 103.9	104.9	102.4	101.7	99.7	95.4	-4.3	6.2	
	Trend r	"	101.2	103.0	104.0	104.0	103.3	102.3	101.0	99.6	98.4	-1.2	6.0	
M20. Portland cement	Orig.	"	564	515	625	r 616	659	661	642	614	615	0.2	-4.5	
	S. adj.	"	544	541	581	r 590	641	625	645	572	546	4.5	-4.7	
	Trend r	"	552	561	580	599	613	616	610	599	584	-2.5	5.1	
M21. Clay bricks	Orig.	million	172.6	143.8	166.9	161.3	155.5	174.9	163.0	159.1	166.7	4.8	3.7	
	S. adj.	"	150.3	150.9	150.9	154.9	155.4	155.6	156.6	157.8	154.6	-2.0	3.0	
	Trend r	"	152.5	152.6	152.9	153.6	154.6	155.7	156.3	156.6	156.7	0.1	4.9	
M22. Basic iron, spiegeleisen and sponge iron	Orig.	'000 tonnes	607	628	652	646	643	649	643	644	627	-2.6	4.5	
	S. adj.	"	634	649	696	696	609	613	614	602	600	-0.3	5.5	
	Trend r	"	641	658	664	658	644	627	613	601	591	-1.7	4.5	
M23. Blooms and Slabst(j)	Orig.	"	647	667	681	658	661	680	681	697	653	6.3	2.4	
	S. adj.	"	691	705	738	704	611	618	645	671	612	-8.8	1.3	
	Trend r	"	686	697	695	682	664	648	637	630	625	-0.8	3.7	
M24. Cars and station wagons	Orig.	number	29,548	21,375	28,792	26,159	25,221	29,115	30,391	29,057	30,412	4.7	8.7	
	S. adj.	"	25,458	25,630	25,235	23,846	23,510	24,982	27,759	27,254	26,887	-1.3	7.8	
	Trend r	"	25,830	25,258	24,750	24,614	24,893	25,449	26,104	26,726	27,289	2.1	8.6	
M25. Vehicles for goods and materials(k)	Orig.	"	2,358	1,949	2,401	2,074	2,119	2,385	2,461	2,451	2,621	6.9	20.7	
	S. adj.	"	2,070	2,251	2,132	1,800	2,049	2,001	2,330	2,015	2,606	29.3	17.0	
	Trend r	"	2,041	2,048	2,044	2,038	2,044	2,086	2,160	2,245	2,341	4.3	23.1	
M26. Refrigerators, domestic	Orig.	'000	49.4	34.4	38.9	38.1	31.2	30.8	32.8	36.5	40.8	11.6	-2.0	
	S. adj.	"	43.2	40.7	38.0	42.9	36.1	28.1	34.1	34.3	34.4	0.4	-3.0	
	Trend r	"	41.0	41.0	39.8	38.0	36.1	34.5	33.5	32.9	32.7	-0.7	13.8	
M27. Clothes washing machines, domestic	Orig.	"	29.4	24.0	25.2	29.4	30.2	30.0	30.4	26.3	30.4	15.7	1.7	
	S. adj.	"	25.2	26.0	25.3	28.6	27.9	24.0	27.1	26.7	26.3	-1.3	-3.2	
	Trend r	"	26.0	26.2	26.4	26.6	26.6	26.6	26.5	26.4	26.3	-0.3	-6.4	
M28. Electric motors	Orig. r	"	287	260	275	298	276	283	302	271	274	1.3	6.0	
	S. adj. r	"	249	278	278	298	281	275	253	262	240	-8.4	2.0	
	Trend r	"	267	274	280	282	279	273	265	256	249	-2.9	4.5	
M29. Electricity	Orig.	mil k Wh	13,489	12,509	13,785	13,921	14,603	14,749	r 13,540	r 13,457	13,239	-1.6	-0.5	
	S. adj.	"	13,487	13,279	13,510	13,163	13,447	13,595	r 13,590	r 13,678	13,774	0.7	-1.2	
	Trend r	"	13,482	13,394	13,358	13,378	13,436	13,515	13,596	13,672	13,729	0.4	0.4	
M30. Gas(l)	Orig. r	terrajoules	46,895	46,147	55,011	57,799	62,450	63,896	57,784	53,231	50,354	-5.4	9.3	
	S. adj. r	"	52,553	50,907	50,572	48,140	51,372	50,883	53,306	53,949	53,997	0.1	8.2	
	Trend r	"	50,968	50,615	50,351	50,406	50,836	51,566	52,448	53,308	54,062	1.4	9.6	

For footnotes see end of tables

PRODUCTION STATISTICS, AUSTRALIA, SEPTEMBER QUARTER 1994, PRELIMINARY

No. Item	Series	Unit										Percentage changes between latest quarter shown and-	
			1992		1993			1994				prev. quarter	same quarter prev. year
			Sept.	Dec.	Mar.	June	Sept.	Dec.	Mar.	June	Sept.		
Q1. Undressed sawn Timber(m)(n)	Orig.	'000 cu m	795	766	709	831	856	850	830	928	914	-1.5	6.8
	S. adj.	"	771	754	772	803	829	838	902	897	885	-1.4	6.7
	Trend r	"	761	763	777	797	826	857	882	895	897	0.2	8.6
Q2. Alumina(m)	Orig.	'000 tonnes	2,948	3,054	3,094	3,125	3,225	3,154	3,172	3,209	3,215	0.2	0.3
	S. adj.	"	2,908	3,025	3,137	3,153	3,183	3,124	3,216	3,237	3,174	-2.0	-0.3
	Trend r	"	2,946	3,023	3,111	3,159	3,162	3,173	3,195	3,209	3,211	0.1	1.5
Q3. Zinc(m)(o)	Orig.	"	87	82	76	88	73	79	82	81	82	1.2	12.3
	S. adj.	"	n.a.	n.a.	n.a.	n.a.	n.a.	n.a.	n.a.	n.a.	n.a.	n.a.	n.a.
	Trend r	"	85	84	81	79	79	79	80	81	82	0.1	3.6
Q4. Silver(m)	Orig.	tonnes	95	87	80	93	88	95	91	104	88	-15.4	0.0
	S. adj.	"	96	82	103	79	89	89	118	89	89	-0.5	-0.1
	Trend r	"	95	93	89	87	89	96	101	97	92	-5.7	2.9
Q5. Copper(m)(o)	Orig.	'000 tonnes	84	82	71	75	84	79	79	87	86	1.1	2.4
	S. adj.	"	79	78	77	78	79	76	85	90	81	-10.1	2.3
	Trend r	"	77	78	78	77	77	80	84	86	86	0.3	11.1
Q6. Lead(m)(p)	Orig.	"	59	56	47	62	51	61	r 55	53	49	-7.5	-3.9
	S. adj.	"	55	54	60	56	48	59	r 69	48	46	-4.9	3.9
	Trend r	"	56	57	56	54	55	59	59	54	48	-11.7	12.8
Q7. Tin(m)(o)	Orig.	tonnes	75	37	73	73	13	63	18	92	70	-23.9	438.5
	S. adj.	"	n.a.	n.a.	n.a.	n.a.	n.a.	n.a.	n.a.	n.a.	n.a.	n.a.	n.a.
	Trend r	"	59	63	61	56	44	38	50	64	69	6.7	58.0
Q8. Gold(m)(q)	Orig.	kg	75,608	69,505	69,676	73,399	r 80,212	73,549	r 74,878	r 78,697	77,846	-1.1	2.9
	S. adj.	"	n.a.	n.a.	n.a.	n.a.	n.a.	n.a.	n.a.	n.a.	n.a.	n.a.	n.a.
	Trend r	"	72,573	71,147	71,467	73,623	75,774	76,412	76,273	76,611	77,268	0.9	2.0

(a) Includes beef, veal, mutton, lamb, pigmeat and buffalo meat produced in the Northern Territory. (b) Chicken meat is shown in dressed weight of whole birds pieces and giblets. (c) Source: Australian Dairy Corporation. (d) Includes ale and stout. Excludes beverages with alcohol content of less than 1.15 per cent. (e) Source: Australian Tobacco Marketing Committee. (f) Includes mixtures predominantly of the fibre named. (g) Particle boards and similar boards of wood or other ligneous material. Includes boards for subsequent conversion to other purposes. Excludes laminated. Seasonally adjusted estimates will not be published until a longer time span of data are available to provide more reliable seasonal factors. (h) Produced by Australian refineries from imported and indigenous petroleum. Source: ABARE. (i) Includes liquid, paste, powder, granules, flakes, blocks, irregular shapes, lumps and similar forms. Seasonally adjusted estimates will not be published until a longer time span of data are available to provide more reliable seasonal factors. (j) From continuous casting. (k) Includes utilities, panel vans and prime movers for semi-trailers. (l) Available for issue through mains. Includes natural gas. (m) Source: ABARE. (n) Expressed in terms of green off saw volumes. (o) Primary origin only. (p) includes lead content of lead from primary sources. (q) From primary and secondary sources.

SENSITIVITY ANALYSIS

Where seasonally adjusted series are known to be highly erratic, an analysis of how sensitive the current trend estimates are to additional data can be useful. Such analysis is referred to as 'sensitivity analysis'.

Readers should exercise care when interpreting the latest month's trend estimates because they will be revised when the next month's seasonally adjusted estimates become available. For further information, see Explanatory Notes 7 and 8.

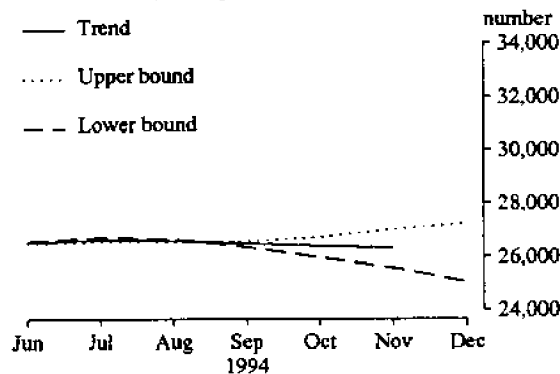
The graph below presents the effect of two possible scenarios on the current and previous trend estimates:

Upper bound The December seasonally adjusted estimate of the production of clothes washing machines, is higher than the November seasonally adjusted estimate by 10%.

Lower bound The December seasonally adjusted estimate of the production of clothes washing machines, is lower than the November seasonally adjusted estimate by 10%.

The percentage change of 10% was chosen because the average absolute percentage change for this series since January 1965 has been 10%.

M27. CLOTHES WASHING MACHINES, DOMESTIC
(Average movement 10%)



EXPLANATORY NOTES

Introduction

1. This publication presents preliminary monthly and quarterly estimates for selected major indicators of production for Australia. A more extensive range of commodities are collected and available on request.

Scope and coverage

2. Production statistics are not collected from single establishment manufacturing enterprises with fewer than four persons employed or from establishments predominantly engaged in non-manufacturing activities but which may carry out in a minor way some manufacturing. However, in general the contribution of these small producers to statistical aggregates is only marginal and data contained in this publication provide reliable information for the evaluation of movements in commodity production.

Comparability with other estimates

3. The ABS publishes quarterly estimates of constant price manufacturing production in the publication *Quarterly Indexes of Industrial Production, Australia* (8125.0). These estimates are shown as index numbers and are derived mainly from estimates of manufacturers' sales and stocks.

4. The production statistics collected monthly and quarterly referred to in paragraph 1 account, in total, for less than half of the output of the manufacturing sector, so differences may occur between the general tendency (if there is one) in these items and changes in the quarterly indexes of industrial production. The comment is even more applicable to the preliminary estimates for the major indicators of production shown in this publication.

Seasonally adjusted and trend-estimates

5. Seasonally adjusted statistics are shown for all the data items contained in this publication. In the seasonal adjustment, account has been taken not only of normal seasonal factors, but also where appropriate, of 'working day' effects (arising from the varying numbers of Sundays, Mondays, Tuesdays, etc. in the month) and the influence of Easter and Australia Day which may, in successive years, affect figures for different months. Details of the methods used in seasonally adjusting these series are available on request.

6. Seasonal adjustment procedures do not aim to remove the irregular or non-seasonal influences which may be present in any particular month, such as the effect of strikes, holiday shutdowns or other factors which vary with the prevailing demand for products. Irregular influences that are highly volatile can make it difficult to interpret the movement of the series even after seasonal adjustment.

7. The smoothing of seasonally adjusted series to create trend estimates is a means of reducing the impact of the irregular component of the series. The trend estimates have been derived by applying a 13-term Henderson weighted moving average to the seasonally adjusted series.

8. While this smoothing technique enables estimates of trend to be produced for the latest month, it does result in revisions to the estimates for the most recent months as data for subsequent months become available. Generally subsequent revisions become smaller and after 3 months have little impact on the series. There will also be revisions as a result of revisions to the original estimates and annual reviews of seasonal and 'working day' factors.

9. Users may wish to refer to the ABS Information Paper *A Guide to Interpreting Time Series - Monitoring 'Trends', an overview* (1348.0) for more detailed information on smoothing of seasonally adjusted time series data.

Related publications

10. Other ABS publications which may be of interest are:

Manufacturing Production, Australia, Household Appliances and Electrical Equipment (8357.0) - final issue June - August 1994

Manufacturing Production, Australia, Clothing and Footwear (8358.0) - final issue July - September 1994

Manufacturing Production, Australia, Food, Drink, Tobacco, Stock and Poultry Food (8359.0) - final issue August - October 1994

Manufacturing Production, Australia, Fibres, Yarns, Fabrics, Bedding and Floor Coverings (8360.0) - final issue August - October 1994

Manufacturing Production, Australia, Building Materials and Fittings (8361.0) - final issue June - August 1994

Manufacturing Production, Australia, Plastics, Rubber, Paints, Detergents and Industrial Chemicals (8362.0) - final issue June - August 1994

Manufacturing Production, Australia, Transport Equipment (8363.0) - final issue July - September 1994

Manufacturing Production, Australia, Metal Products (8367.0) - final issue June - August 1994

Manufacturing Production, Australia, Energy Products (8368.0) - final issue August - October 1994

Manufacturing Production, Australia, Wood and Wood Products (8369.0) - final issue July - September 1994

Manufacturing Production, Australia: Principal Commodities Produced, 1989-90 (8365.0)

Unpublished production data is also available from the ABS Sydney office. Please contact Frank Orton on (02) 268 4245.

11. Current publications produced by the ABS are listed in the *Catalogue of Publications and Products, Australia* (1101.0). The ABS also issues, on Tuesdays and Fridays, a *Publications Advice* (1105.0) which lists publications to be released in the next few days. The Catalogue and Publications Advice are available from any ABS office.

Symbols and other usages

n.y.a.	not yet available
r	figure or series revised since previous issue
n.a.	not available
n.p.	not publishable



For more information ...

The ABS publishes a wide range of statistics and other information on Australia's economic and social conditions. Details of what is available in various publications and other products can be found in the *ABS Catalogue of Publications and Products* available at all ABS Offices (see below for contact details).

Information Consultancy Service

Information tailored to special needs of clients can be obtained from the Information Consultancy Service available at ABS Offices (see Information Inquiries below for contact details).

National Dial-a-Statistic Line

0055 86 400

(Steadycom P/L, premium rate 25c/21.4 secs.)

This number gives 24-hour access, 365 days a year for a range of statistics.

Electronic Data Services

A large range of data is available via on-line services, diskette, magnetic tape, tape cartridge and CD ROM. For more details about our electronic data services, contact any ABS Office (see below).

Bookshops and Subscriptions

There are over 400 titles of various publications available from ABS bookshops in all ABS Offices (see below Bookshop Sales for contact details). The ABS also provides a subscription service through which nominated publications are provided by mail on a regular basis at no additional cost (telephone Publications Subscription Service toll free on 008 02 0608 Australia wide).

Sales and Inquiries

Regional Offices	Information Inquiries	Bookshop Sales
SYDNEY (02)	268 4611	268 4620
MELBOURNE (03)	615 7000	615 7829
BRISBANE (07)	222 6351	222 6350
PERTH (09)	360 5140	360 5307
ADELAIDE (08)	237 7100	237 7582
HOBART (002)	20 5800	20 5800
CANBERRA (06)	207 0326	207 0326
DARWIN (089)	43 2111	43 2111
National Office		
ACT (06)	252 6007	008 020 608

ABS Email Addresses

Keylink	STAT.INFO/ABS
X.400	(C:AU,A:TELMEMO,O:ABS,SN:INFO,FN:STAT)
Internet	STAT.INFO@ABS. TELEMEMO.AU



Information Services, ABS, PO Box 10, Belconnen ACT 2616

